

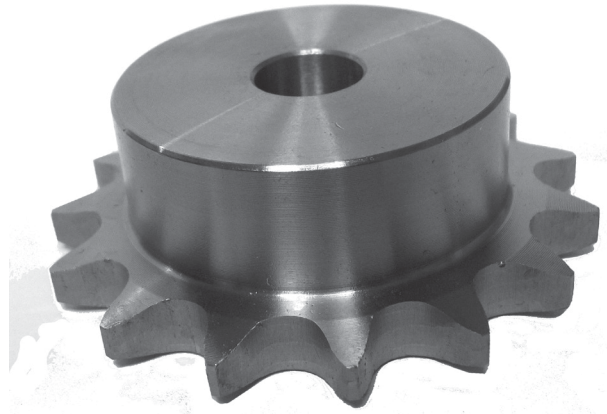
NO. 40 ROLLER CHAIN SPROCKETS

0.500" Pitch

Hub

Minimum Plain Bore

Steel



Part Number	Type	No. of Teeth	Outside Diameter (in)	Stock Bore (in)	Maximum Bore (in)	Face Width (in)	Overall Length (in)	Hub Diameter (in)
40B8	B	8	1.500"	0.500"	0.500"	0.284"	0.875"	• 0.969"
40B9	B	9	1.670"	0.500"	0.563"	0.284"	0.875"	• 1.063"
40B10	B	10	1.840"	0.500"	0.750"	0.284"	0.875"	• 1.250"
40B11	B	11	2.000"	0.500"	0.875"	0.284"	0.875"	• 1.375"
40B12	B	12	2.170"	0.500"	1.000"	0.284"	0.875"	• 1.438"
40B13	B	13	2.330"	0.500"	1.063"	0.284"	0.875"	• 1.438"
40B14	B	14	2.490"	0.500"	1.125"	0.284"	0.875"	• 1.688"
40B15	B	15	2.650"	0.500"	1.250"	0.284"	0.875"	• 1.813"
40B16	B	16	2.810"	0.625"	1.375"	0.284"	0.875"	2.000"
40B17	B	17	2.980"	0.625"	1.438"	0.284"	1.000"	2.125"
40B18	B	18	3.140"	0.625"	1.500"	0.284"	1.000"	2.313"
40B19	B	19	3.300"	0.625"	1.750"	0.284"	1.000"	2.500"
40B20	B	20	3.460"	0.625"	1.875"	0.284"	1.000"	2.625"
40B21	B	21	3.620"	0.625"	1.875"	0.284"	1.000"	2.750"
40B22	B	22	3.780"	0.625"	1.875"	0.284"	1.000"	2.875"
40B23	B	23	3.940"	0.625"	2.000"	0.284"	1.000"	3.000"
40B24	B	24	4.100"	0.625"	2.250"	0.284"	1.000"	3.250"
40B25	B	25	4.260"	0.625"	2.250"	0.284"	1.000"	3.250"
40B26	B	26	4.420"	0.625"	2.250"	0.284"	1.000"	3.250"
40B27	B	27	4.580"	0.625"	2.250"	0.284"	1.000"	3.250"
40B28	B	28	4.740"	0.625"	2.250"	0.284"	1.000"	3.250"
40B29	B	29	4.900"	0.625"	2.250"	0.284"	1.000"	3.250"
40B30	B	30	5.060"	0.625"	2.250"	0.284"	1.000"	3.250"
40B31	B	31	5.220"	0.625"	2.250"	0.284"	1.000"	3.250"
40B32	B	32	5.380"	0.625"	2.250"	0.284"	1.000"	3.250"
40B33	B	33	5.540"	0.625"	2.250"	0.284"	1.000"	3.250"
40B34	B	34	5.700"	0.625"	2.250"	0.284"	1.000"	3.250"
40B35	B	35	5.860"	0.625"	2.250"	0.284"	1.000"	3.250"
40B36	B	36	6.020"	0.625"	2.250"	0.284"	1.000"	3.250"
40B37	B	37	6.180"	0.625"	2.250"	0.284"	1.000"	3.250"

- Has a recessed groove in the hub for chain clearance •

Roller chain sprocket part numbers can be determined as follows:

Chain + (A for Hubless or B for Hub) + Number of Teeth

For example: 40B37 = 40 Chain + B for Hub + 37 Teeth